

'Specialized' resin sealer
160g/m² alkali mesh
EBC or MLC plaster coat.
Finish coat.

'ALLWALL' render bricks



**ALLWALL LIGHTWEIGHT
BRICK
RENDERED CLADDING
SYSTEM**

allwall building products.
www.allwall.co.nz

0800 ALLWALL (0800 255 925)
90a Maleme Street, Greerton, Tauranga

CONTENTS: DETAIL INDEX.

Disclaimer:

Warranty:

Contacts:

**0800 ALLWALL [0800 255 925] www.allwall.co.nz
90a Maleme Street. Greerton. Tauranga.**

| DETAIL No. | DETAIL DESCRIPTION | PAGE. |
|------------|---|-------|
| | General description and layout. | 1 |
| | Isometric elevation | 2 |
| 01A | Door sill. | 3 |
| 02A | Rebated slab (flush with foundation) | 4 |
| 03A | Rebated slab (5mm overhang) | 5 |
| 04A | External corner. | 6 |
| 05A | Internal corner. | 7 |
| 06A | Aluminium window sill. | 8 |
| 07A | Aluminium window head (flush cladding) | 9 |
| 08A | Aluminium window head (rebated cladding) | 10 |
| 09A | Aluminium window jamb. | 11 |
| 10A | Top of wall - Soffit. | 12 |
| 11A | Top of wall - sloping soffit | 13 |
| 12A | Top of wall - sloping soffit (rev) | 14 |
| 13A | Vertical joint detail | 15 |
| 14A | | 16 |
| 15A | External pipe detail | 17 |
| 16A | Meter board detail | 18 |
| 17A | Meter board detail - jamb | 19 |
| 18A | Pergola beam detail. | 20 |
| 19A | Interstorey detail | 21 |
| 20A | Bevel-back horizontal weatherboards (internal corner) | 22 |
| 21A | Bevel-back horizontal weatherboards (external corner) | 23 |
| 22A | Bevel-back horizontal weatherboards (abutting) | 24 |

DISCLAIMER

The specification and detailed drawings depicted on the following pages represent typical applications for "ALLWALL" cladding system. They are designed to help provide solutions to designers' and specifiers'.

If you in anyway wish to modify a drawing that is contained in this document or you have a specific detail that you require but is not shown on any of the following pages, please contact 'ALLWALL BUILDING PRODUCTS' LTD immediately to discuss your requirements.

WARRANTY.

The recommendations, suggestions, statements and technical data provided by 'ALLWALL BUILDING PRODUCTS' LTD are based on the best current knowledge available and are given for information purposes only without any responsibility for their use. It is expressly understood and agreed that the buyers sole and exclusive remedy shall be the replacement of defective products, and under no circumstance, shall 'ALLWALL BUILDING PRODUCTS' LTD be liable for incidental or consequential damages.

'ALLWALL BUILDING PRODUCTS' LTD neither assumes, nor authorizes, any others to assume for it any liability with respect to furnishing of the product.

Handling and use of the products are beyond the control of

'ALLWALL BUILDING PRODUCTS' LTD: therefore, no warranty is made, expressed or implied, as to the results or on site quality that can be obtained from the use of this products.

The long term durability of the 'ALLWALL' cladding system is dependent on the correct preparation and application of all of its components in strict accordance with all the relevant written instructions and detail sheets. On-site application is beyond the control of 'ALLWALL BUILDING PRODUCTS' LTD and it cannot guarantee workmanship or the correct preparation and application of its products or systems. The licensed plasterer in conjunction with the stonemason shall take the overall responsibility for: on-site supervision, staff training, installation, and quality control.

'ALLWALL' PLASTER BRICK CLADDING. – SPECIFICATION.

SEALING THE SUBSTRATE

The surface of the 'ALLWALL' bricks must be properly sealed prior to the application of any plaster. To seal the 'ALLWALL' bricks, apply one good coat of undiluted Specialized EZ Panel Resin over the entire. Resin can be applied with a pump up sprayer, long nap roller or wide paint brush at a spread rate of 10-12m² per litre. Failing to correctly prepare the surface of the 'ALLWALL' bricks may cause delimitation, chalking or failure in the base coat.

PVC BEADS.

All exposed corners and edges, must be protected by gluing on the appropriate PVC section. The beads are glued on with Sika Nailbond Adhesive.

MESH COATING.

The areas around all penetrations should be completed first using EZpanel Base Coat to bed the soft flexible 160g/m² alkali resistant mesh that is attached to the penetration flashings. Once all the penetrations and awkward areas have been completed all the flat area of wall should be done using a 160g/m² alkali hard mesh.

openings, a second layer of mesh 100 x 200mm (butterfly) must be applied and imbedded in the mesh coat plaster on the diagonal to reduce the chance of any subsequent cracking at these high stress points.

EZPANEL BASE COAT

Factory-mixed polymer modified plaster coating containing Portland cement, sand, lime and other admixtures.

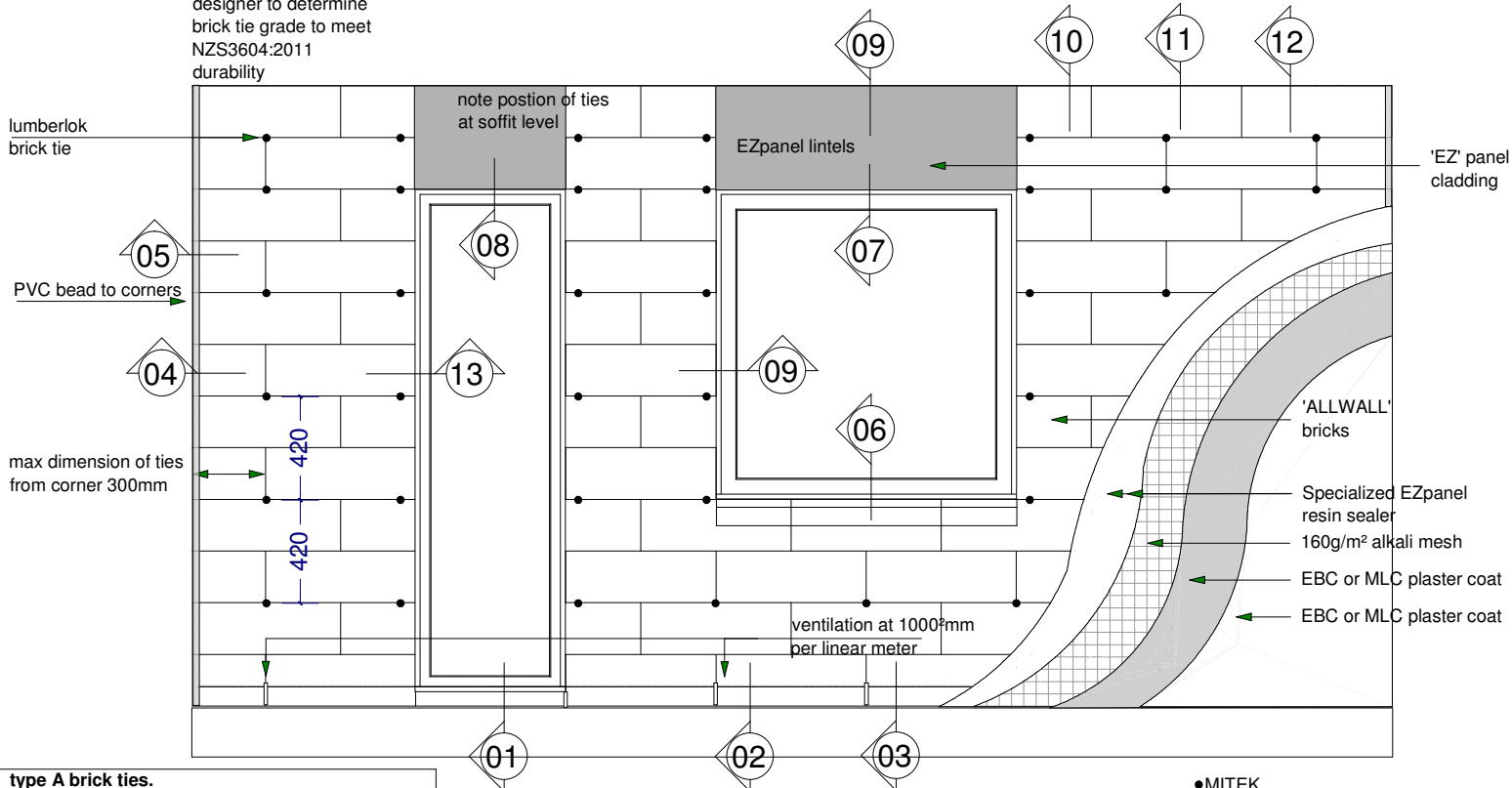
Used as a bedding compound for the fiberglass mesh used to reinforce the surface of the AAC panels.

PAINT

Plastershield 100% acrylic latex compatible with cement based plaster and suitable for textured surfaces and tinted to the selected colour.

TYPICAL DETAIL SCHEMATIC

designer to determine
brick tie grade to meet
NZS3604:2011
durability



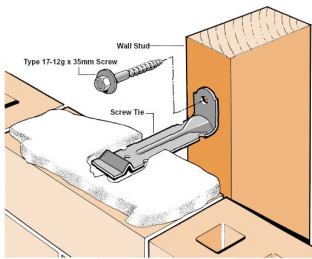
type A brick ties.
Vertical - brick ties every 400crs.
Special note: Brick ties must be
in first course down from soffit

Horizontal: brick ties every 600crs.
additional ties will be within 300mm to corners

ALLWALL LIGHTWEIGHT BRICK.

•MITEK
BRICK TIE

DESIGN FOR Eq A:B:C: single storey
Double storey shall be to specific design



timber framing
to NZS3604:2011

tektion or similar
approved building
wrap to cavity

'ALLWALL' render bricks
with 40 - 75mm cavity
(50mm recommended)

Specialized EZpanel
resin sealer

160g/m² alkali mesh

EBC or MLC plaster coat

EBC or MLC plaster coat

weep holes or
vents to achieve
ventilation

1000²mm per
linear metre
mesh reinforcing

DPC to bottom of framing
tankit or similar approved
damp proofing to rebate.

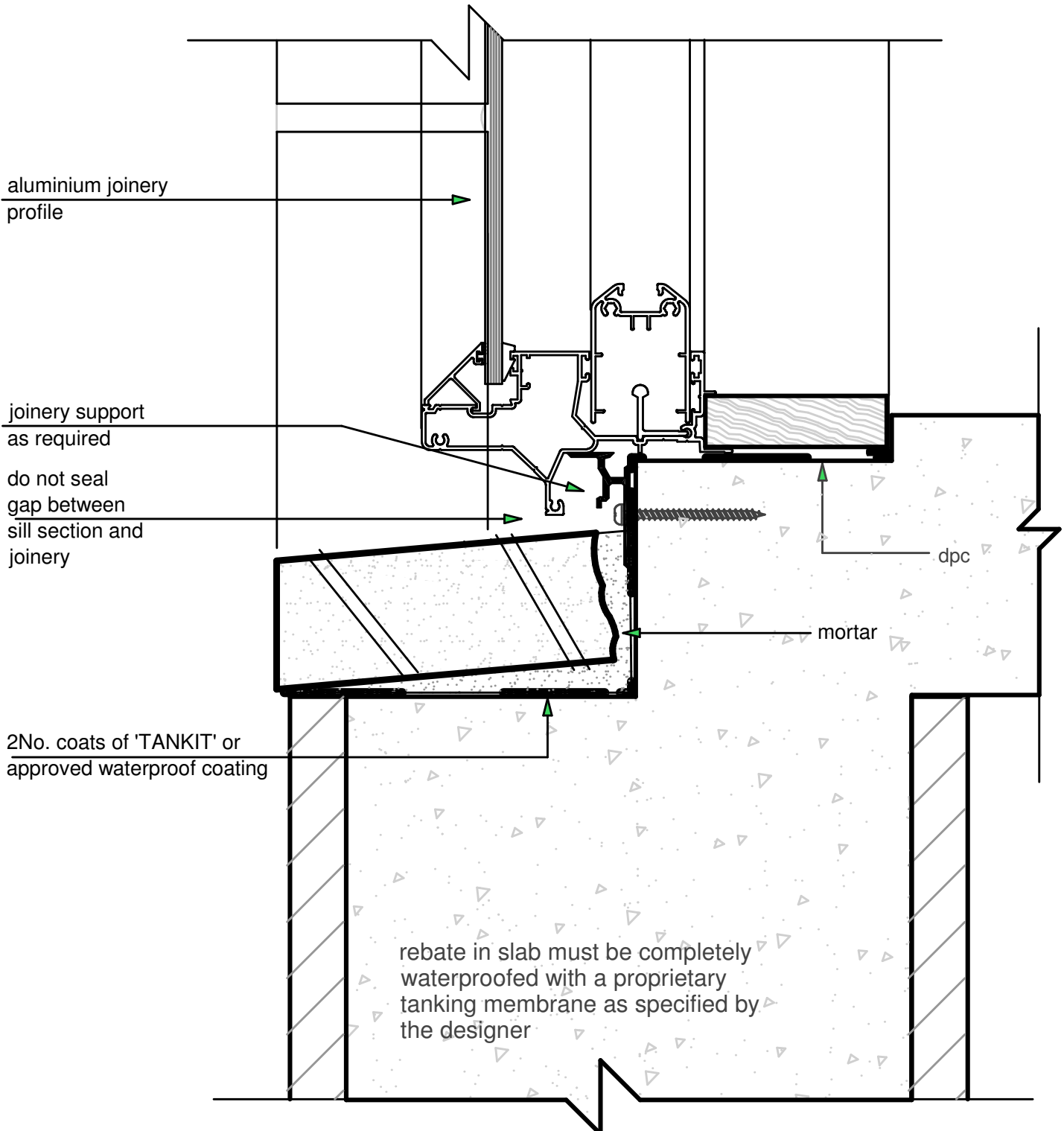
NOTE: when plaster render
is carried over to concrete
foundation, a control joint
must be placed between.
see detail [04A]

concrete foundation

ALLWALL LIGHTWEIGHT RENDER BRICK SYSTEM

ALLWALL LIGHTWEIGHT BRICK.



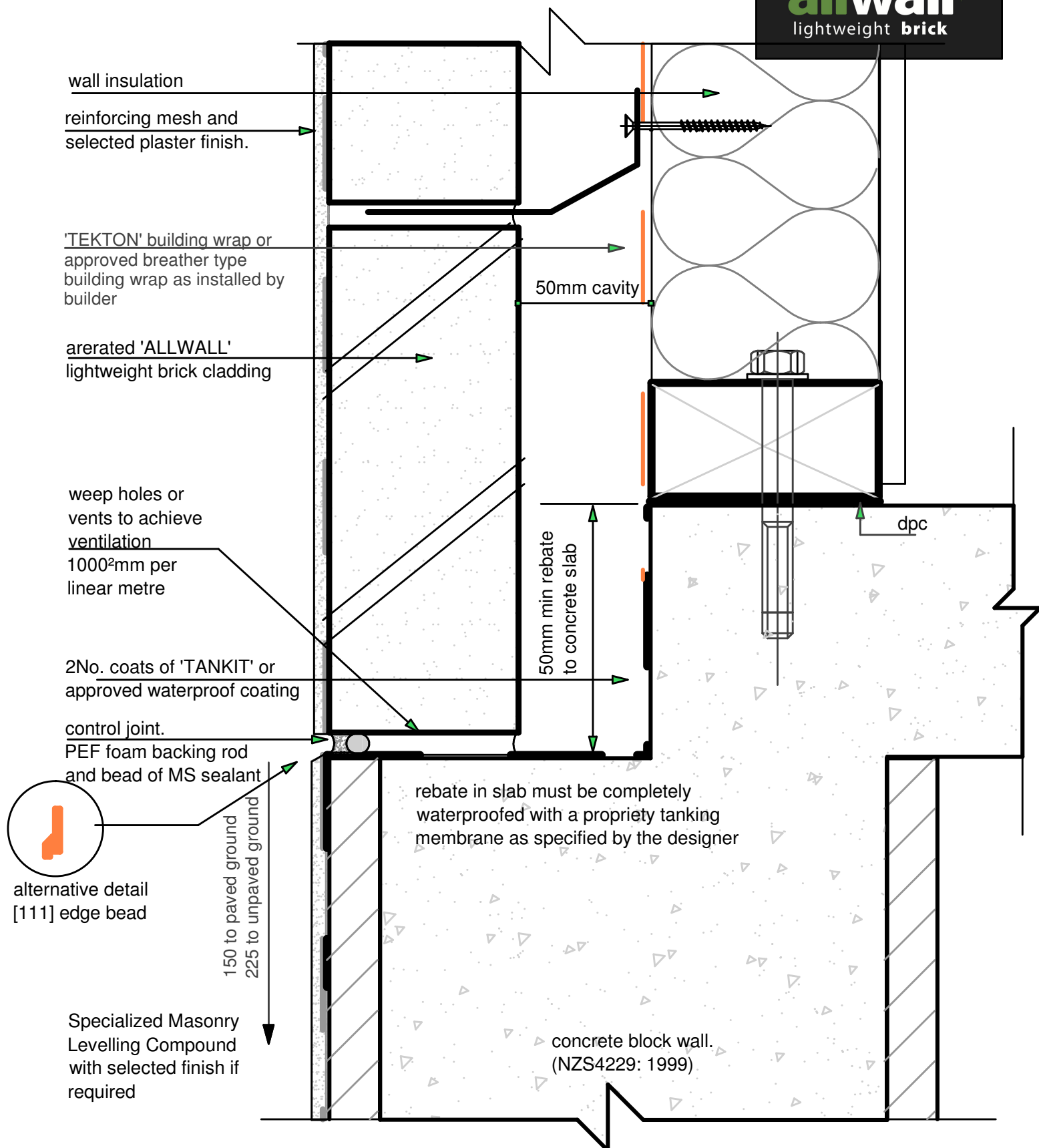


01A

scale 1:2

ALUMINIUM DOOR SILL

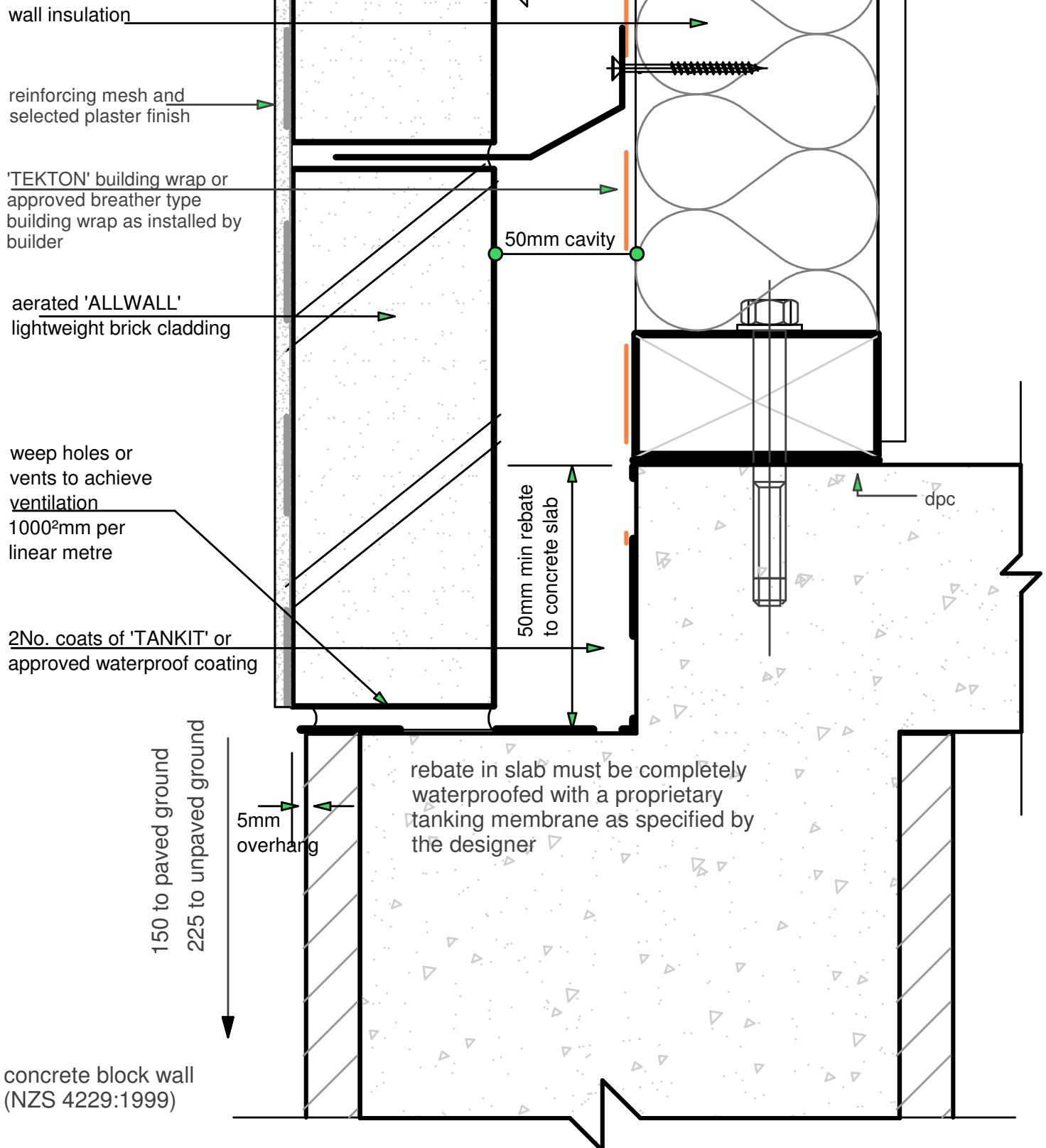
ALLWALL LIGHTWEIGHT BRICK.



02A
scale 1:2

REBATED CONCRETE SLAB DETAIL

ALLWALL LIGHTWEIGHT BRICK.



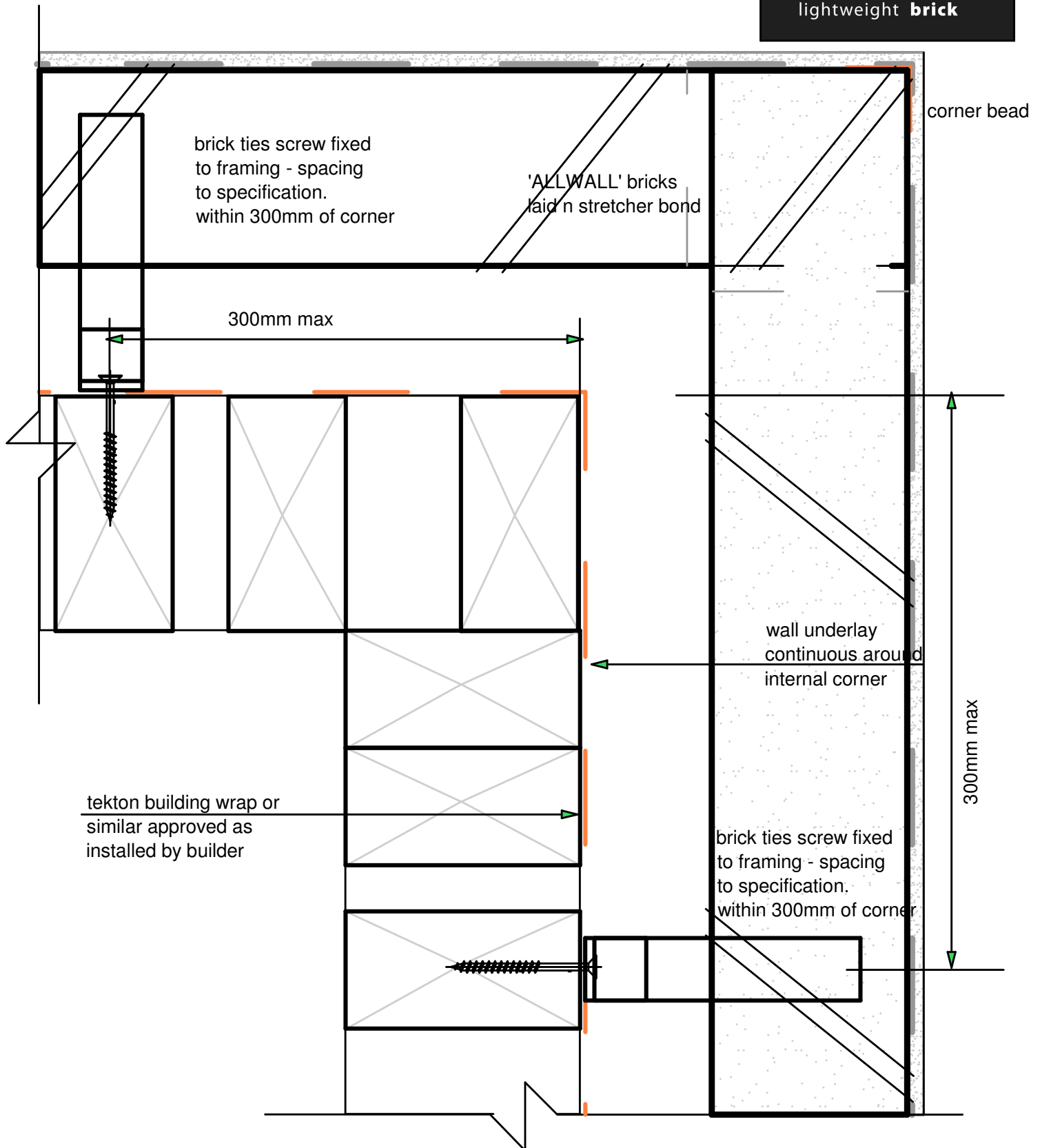
03A

scale 1:2

REBATED CONCRETE SLAB DETAIL

(120mm block rebate).

ALLWALL LIGHTWEIGHT BRICK.

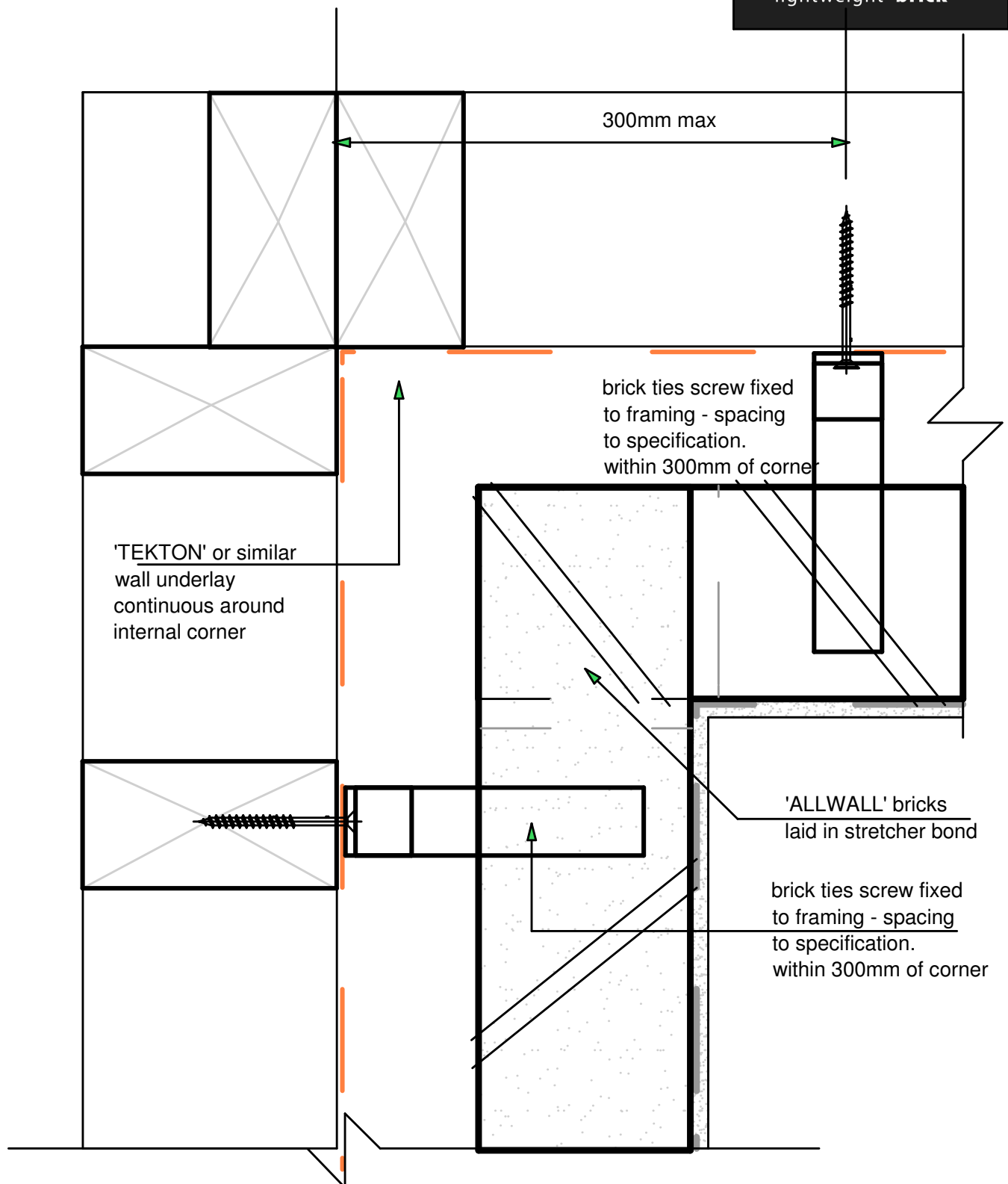


04A

scale 1:2

EXTERNAL CORNER DETAIL

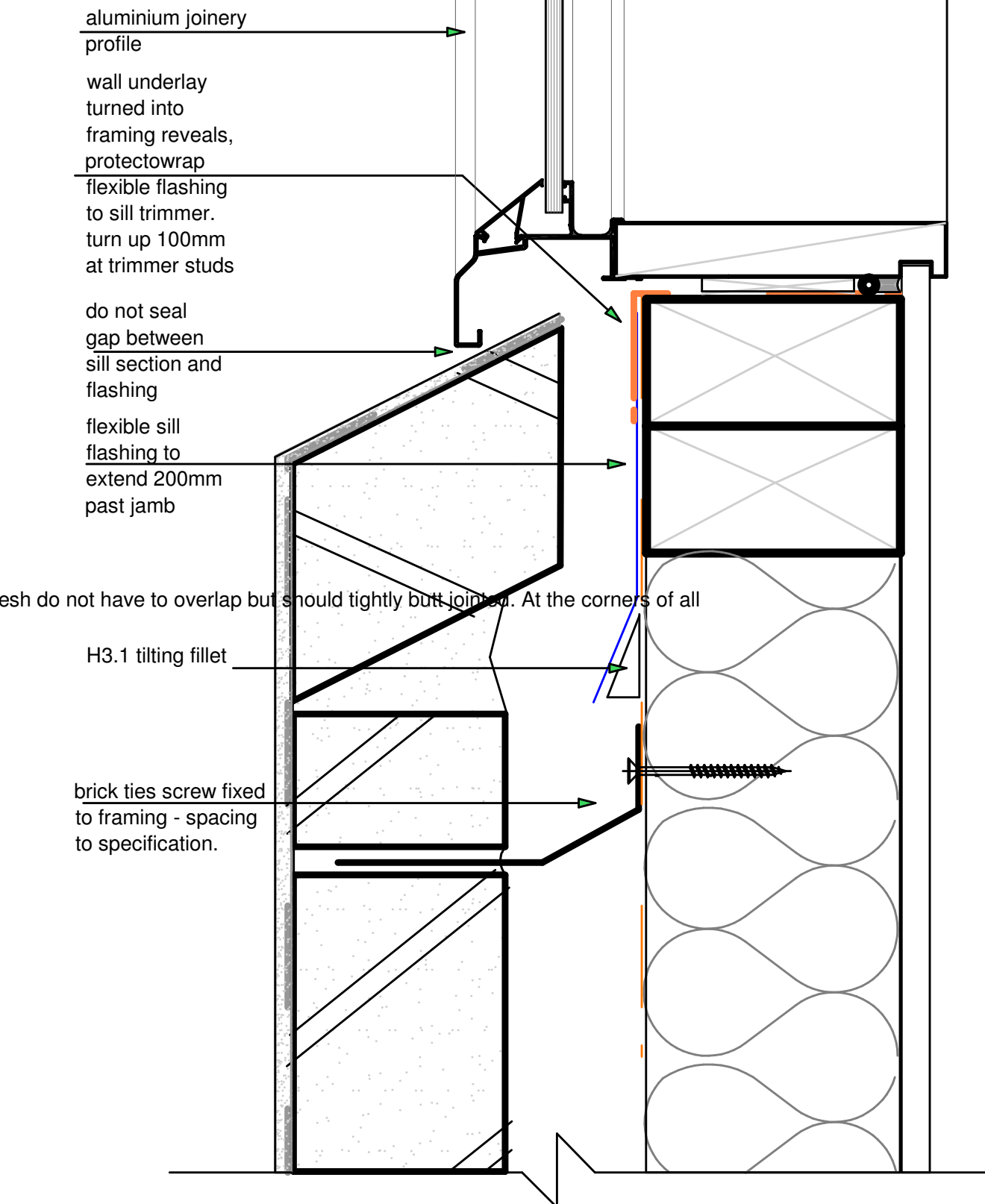
ALLWALL LIGHTWEIGHT BRICK.



05A
scale 1:2

INTERNAL CORNER DETAIL

ALLWALL LIGHTWEIGHT BRICK.



06A
scale 1:2

ALUMINIUM WINDOW SILL

ALLWALL LIGHTWEIGHT BRICK.

'TEKTON' building wrap or
approved breather type
building wrap as installed by
builder

70mm 'EZ PANEL'
selected plaster finish

125mm

35mm H3.1 packer
to framing (boulder)

discontinuous horizontal
45x20 EPS battens
on 15° slope and no
more than 100mm in
length as required for
fixing

'EZ panel' proprietary
brick head flashing

building wrap to be continued
under lintel and taped with
Protectowrap System (or similar)
at corner by builder

aerated 'ALLWALL'
lightweight brick cladding

air seal to be
installed by builder

07A

scale 1:2

WINDOW HEAD DETAIL

ALLWALL LIGHTWEIGHT BRICK.

'TEKTON' building wrap or approved breather type building wrap as installed by builder

50mm 'EZ PANEL'
selected plaster finish

building wrap to be continued under lintel and taped with Protectowrap System (or similar) at corner by builder

discontinuous horizontal 45x20 EPS battens on 15° slope and no more than 100mm in length as required for fixing

'EZ panel' proprietary brick head flashing

metal head flashing with 15° slope.
must have folded ends folded vertically a min of 25mm and head flashing must be sealed against brick veneer, to be supplied and installed by others.

aerated 'ALLWALL' lightweight brick cladding

5mm

35mm cover

air seal to be installed by builder

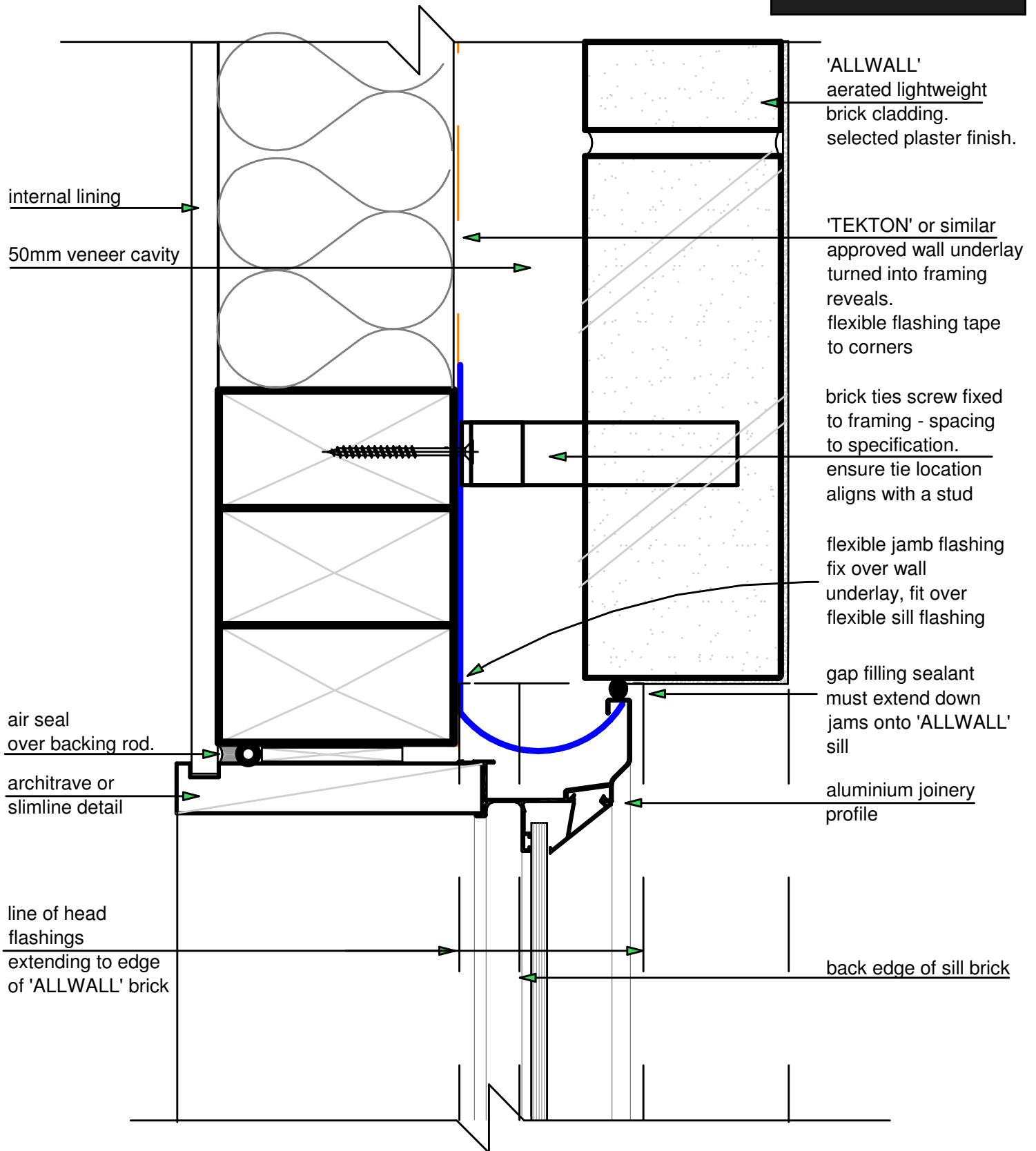
(option)

08A

scale 1:2

WINDOW HEAD DETAIL

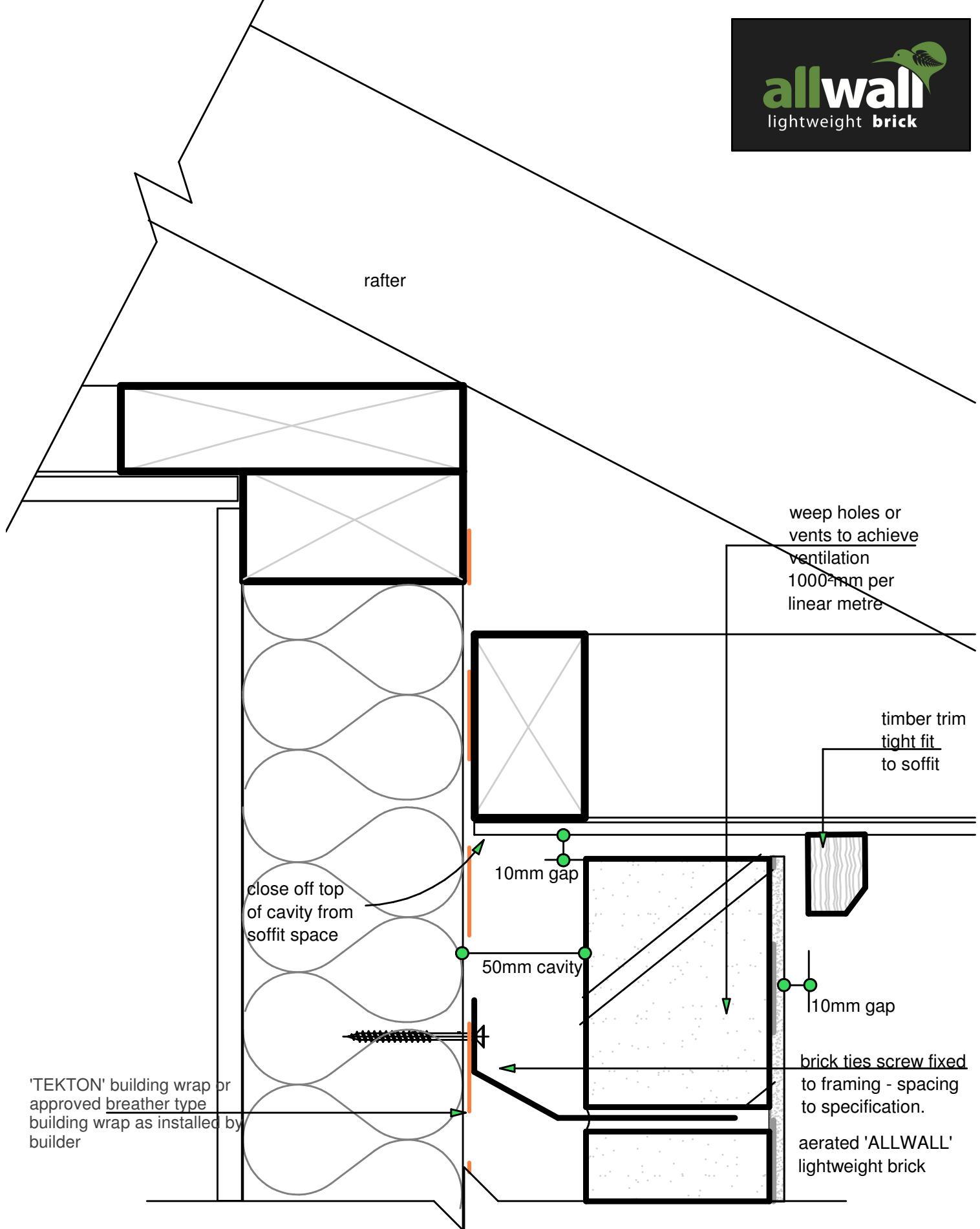
ALLWALL LIGHTWEIGHT BRICK.



09A
scale 1:2

ALUMINIUM WINDOW JAMB

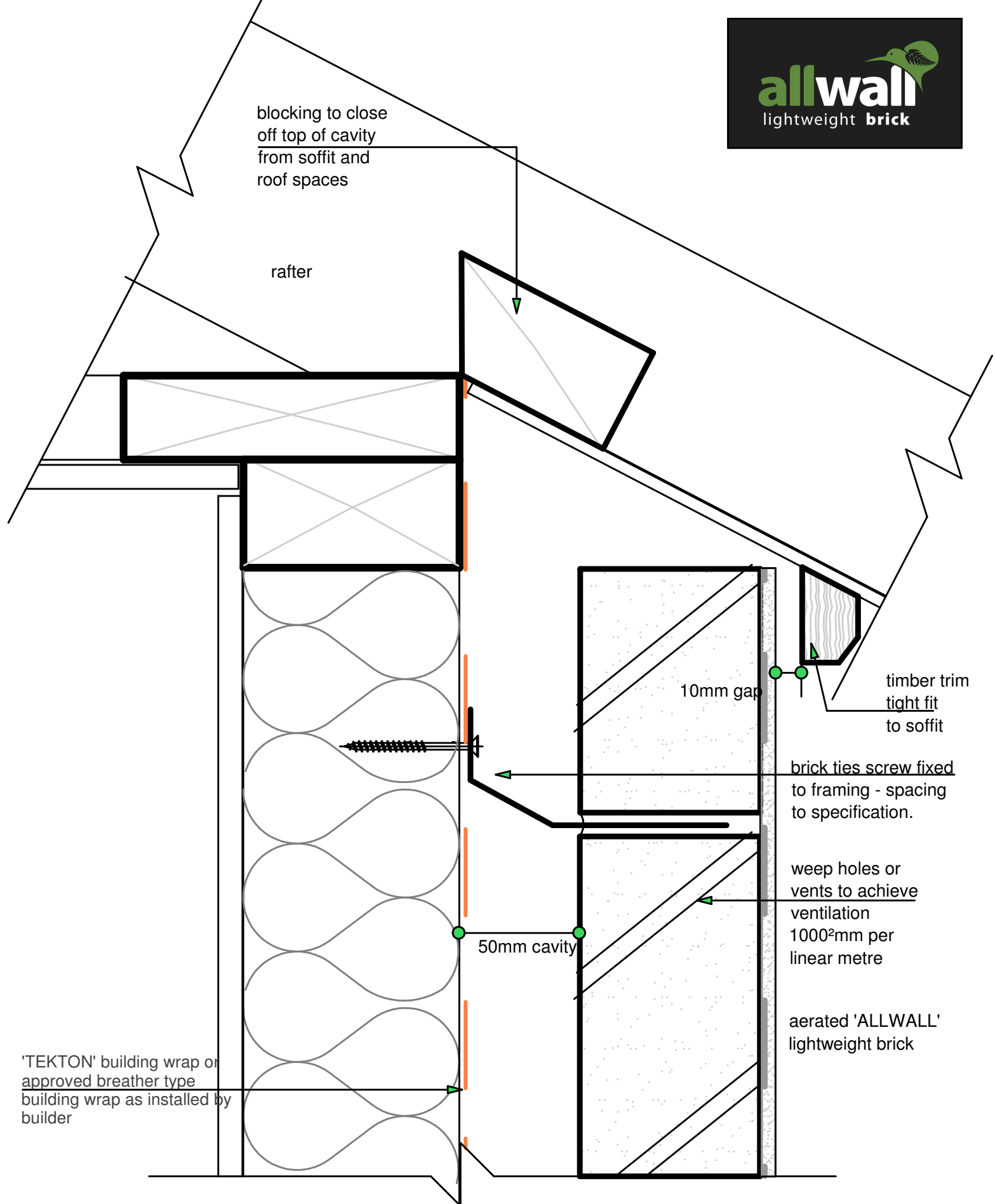
ALLWALL LIGHTWEIGHT BRICK.



10A
scale 1:2

TOP OF WALL - SOFFIT

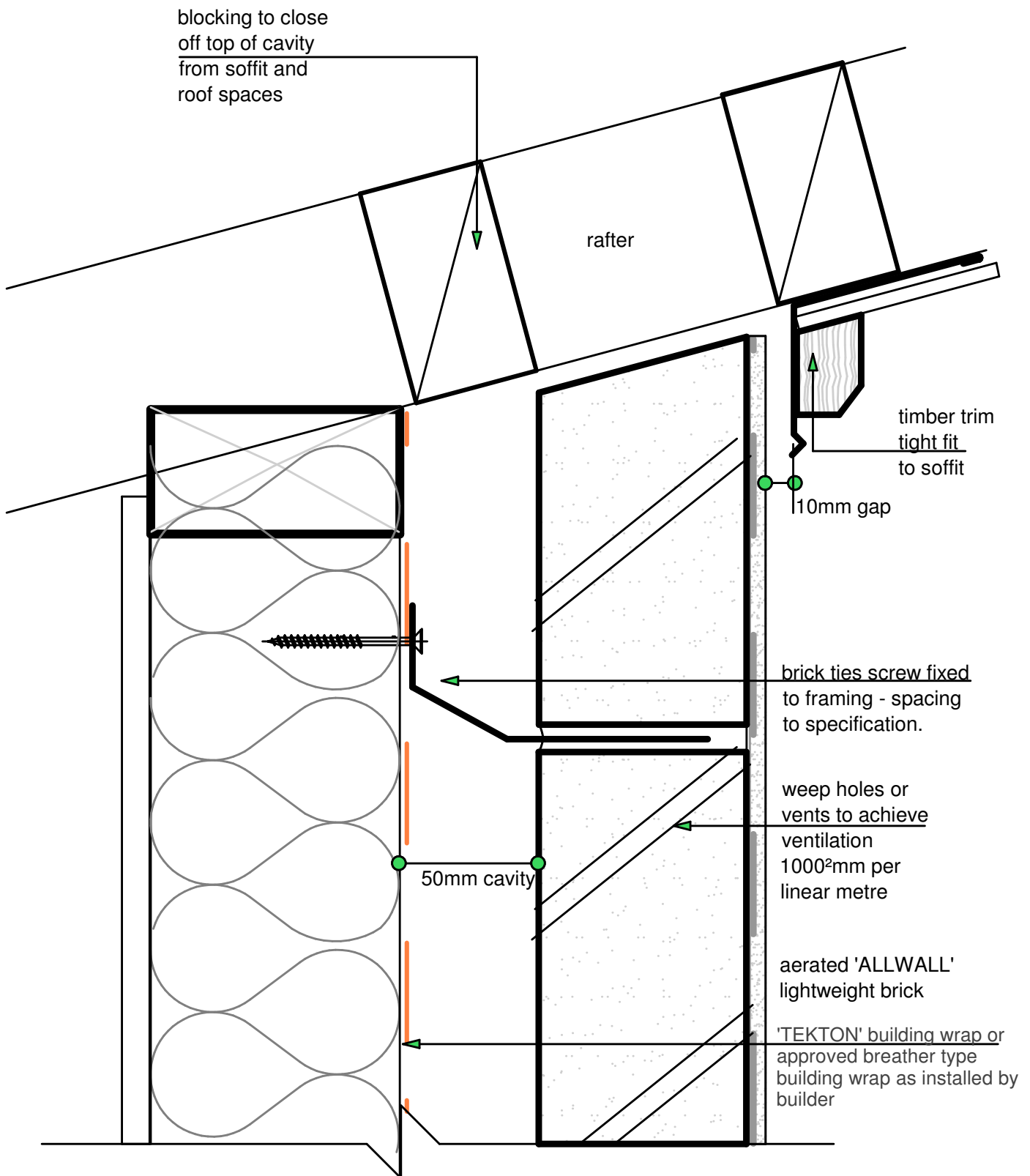
ALLWALL LIGHTWEIGHT BRICK.



11A
scale 1:2

TOP OF WALL - SOFFIT

ALLWALL LIGHTWEIGHT BRICK.

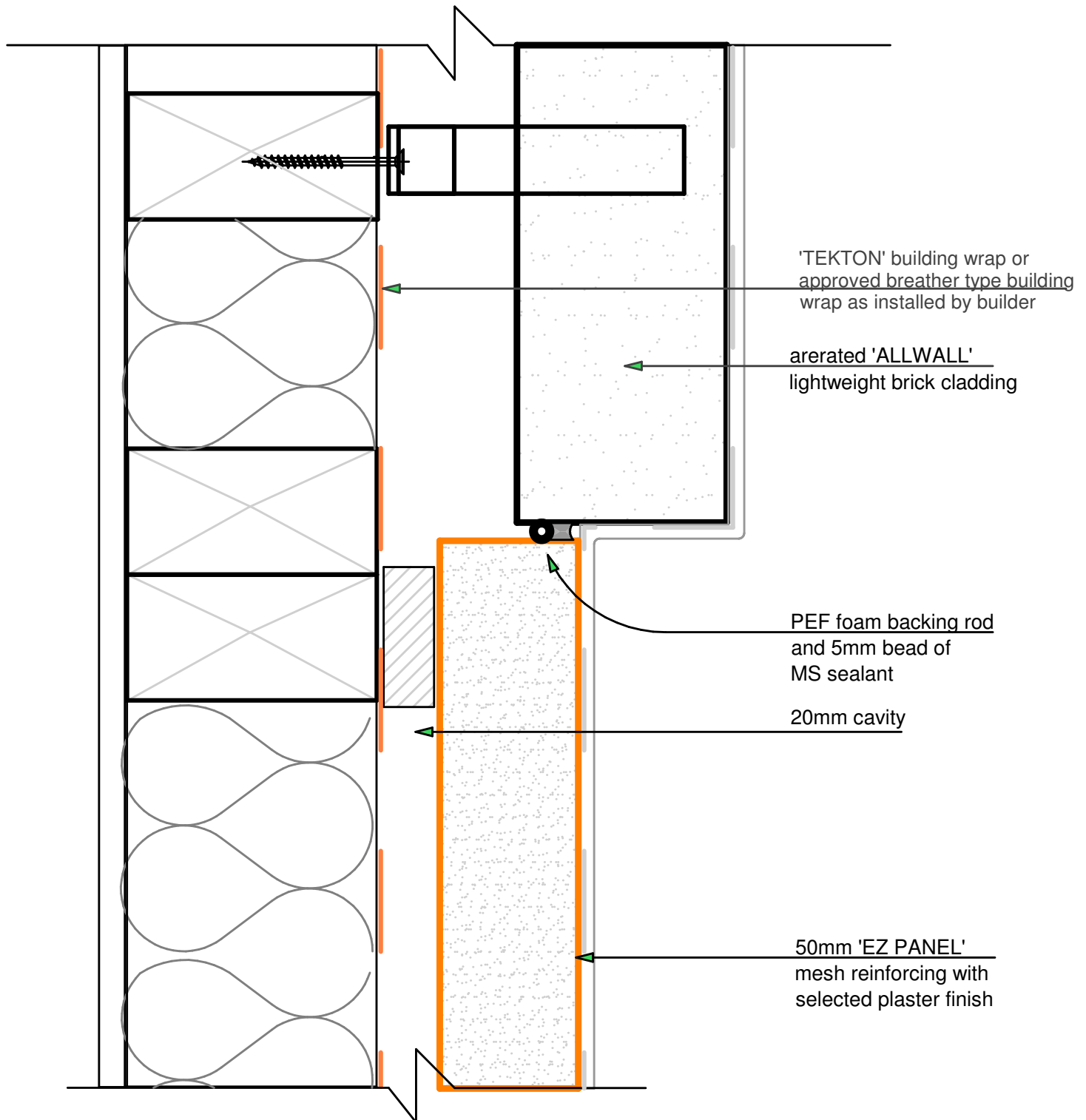


12A

scale 1:2

TOP OF WALL - SOFFIT

ALLWALL LIGHTWEIGHT BRICK.

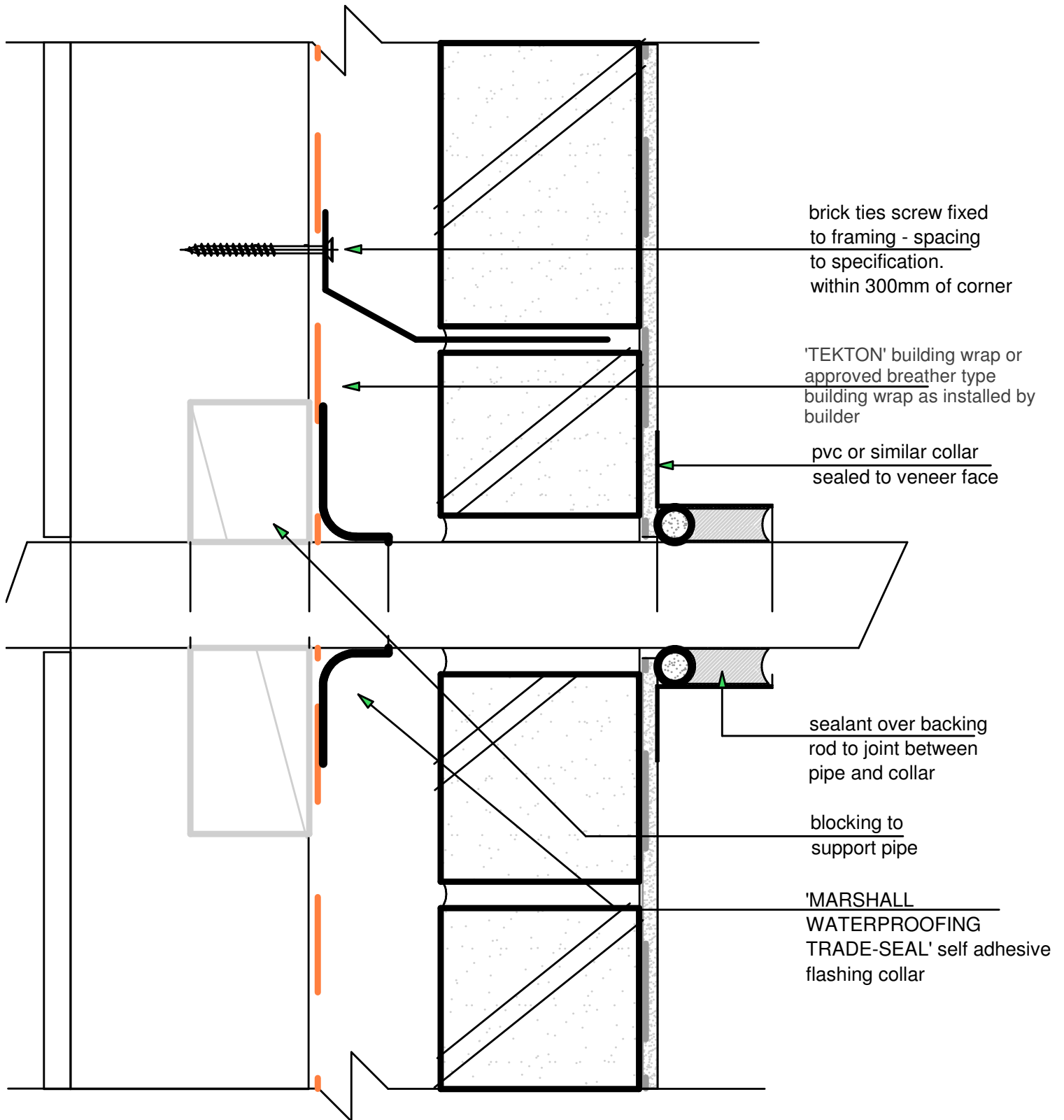


13A

scale 1:2

VERTICAL JOINT DETAIL

ALLWALL LIGHTWEIGHT BRICK.

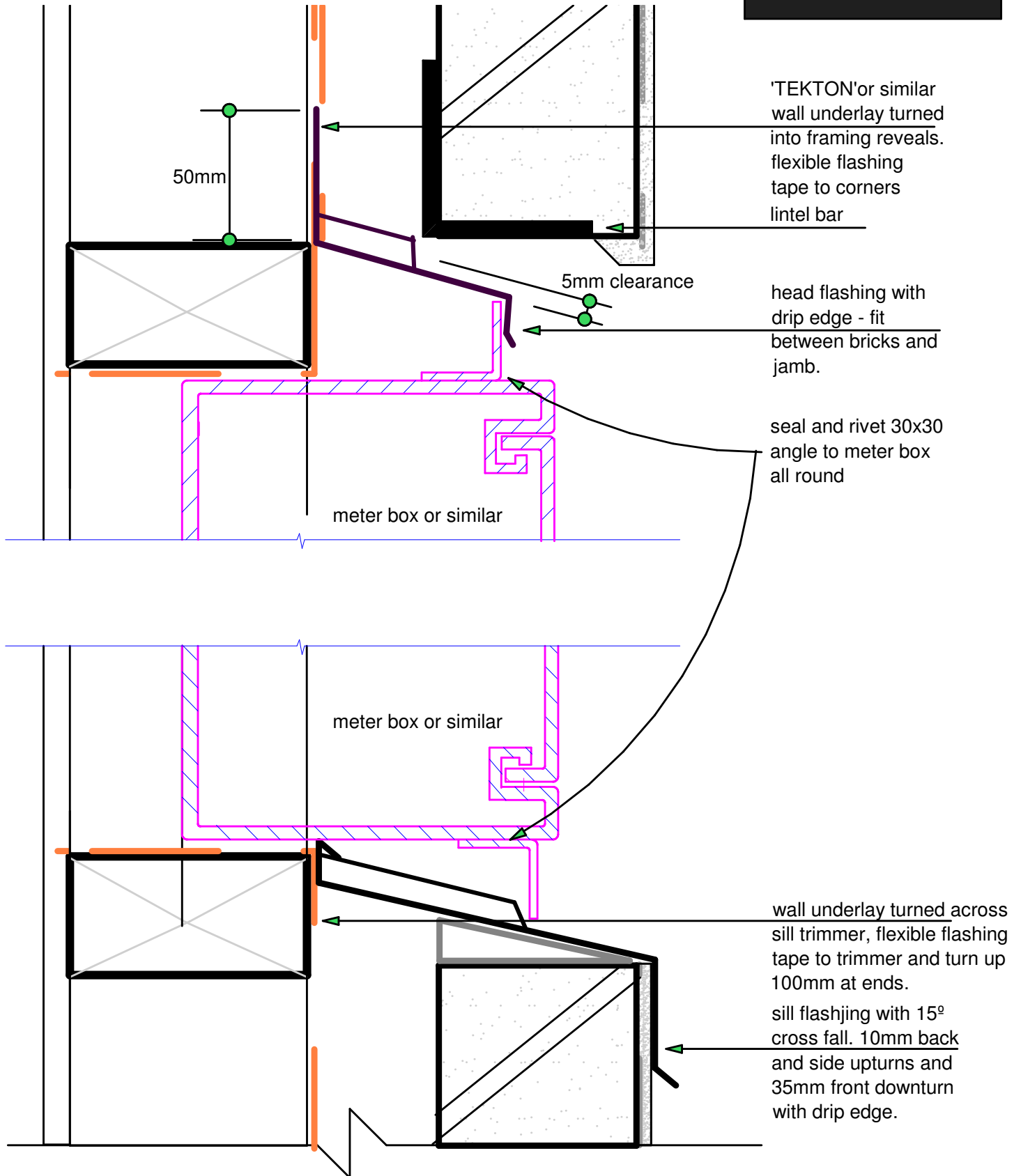


15A

scale 1:2

PIPES UP TO 150mm. (protected location)

ALLWALL LIGHTWEIGHT BRICK.

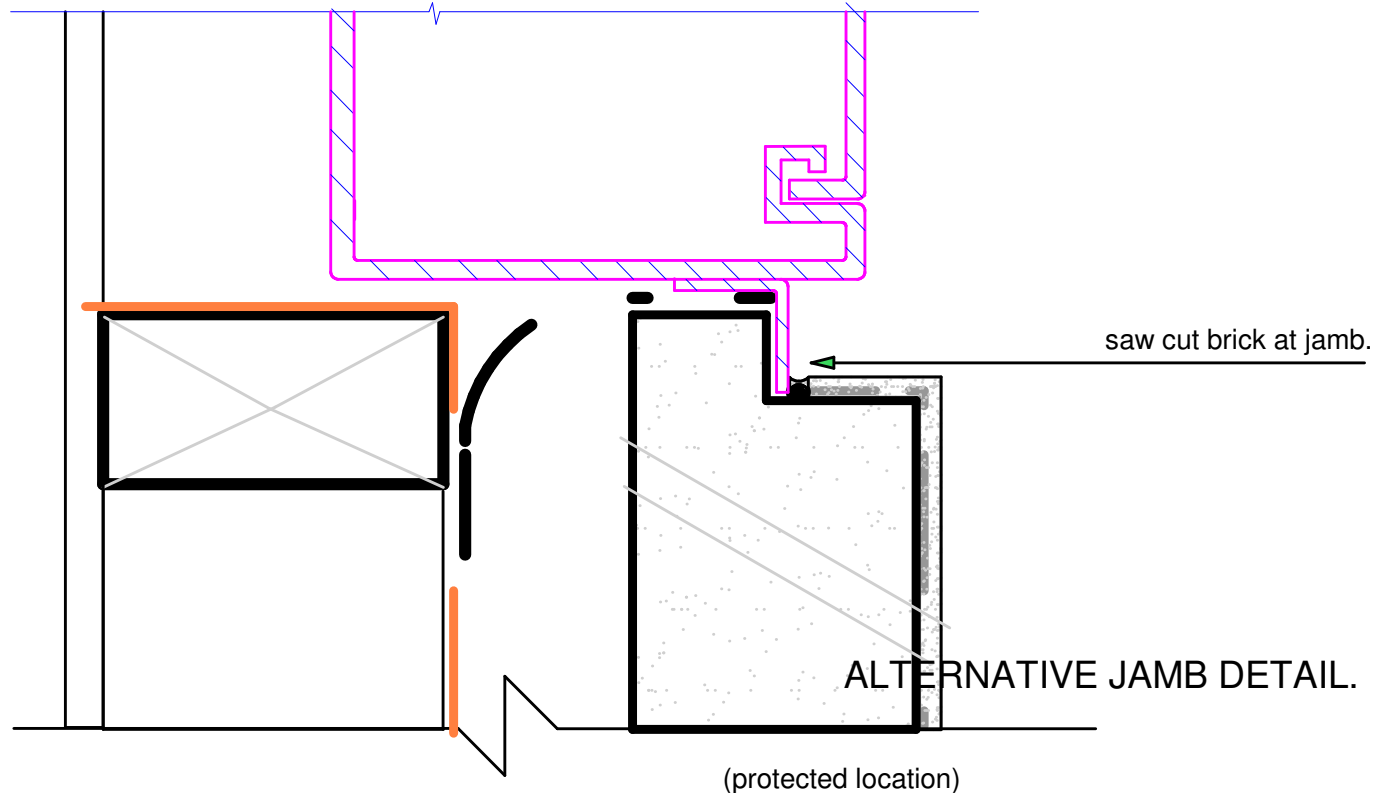
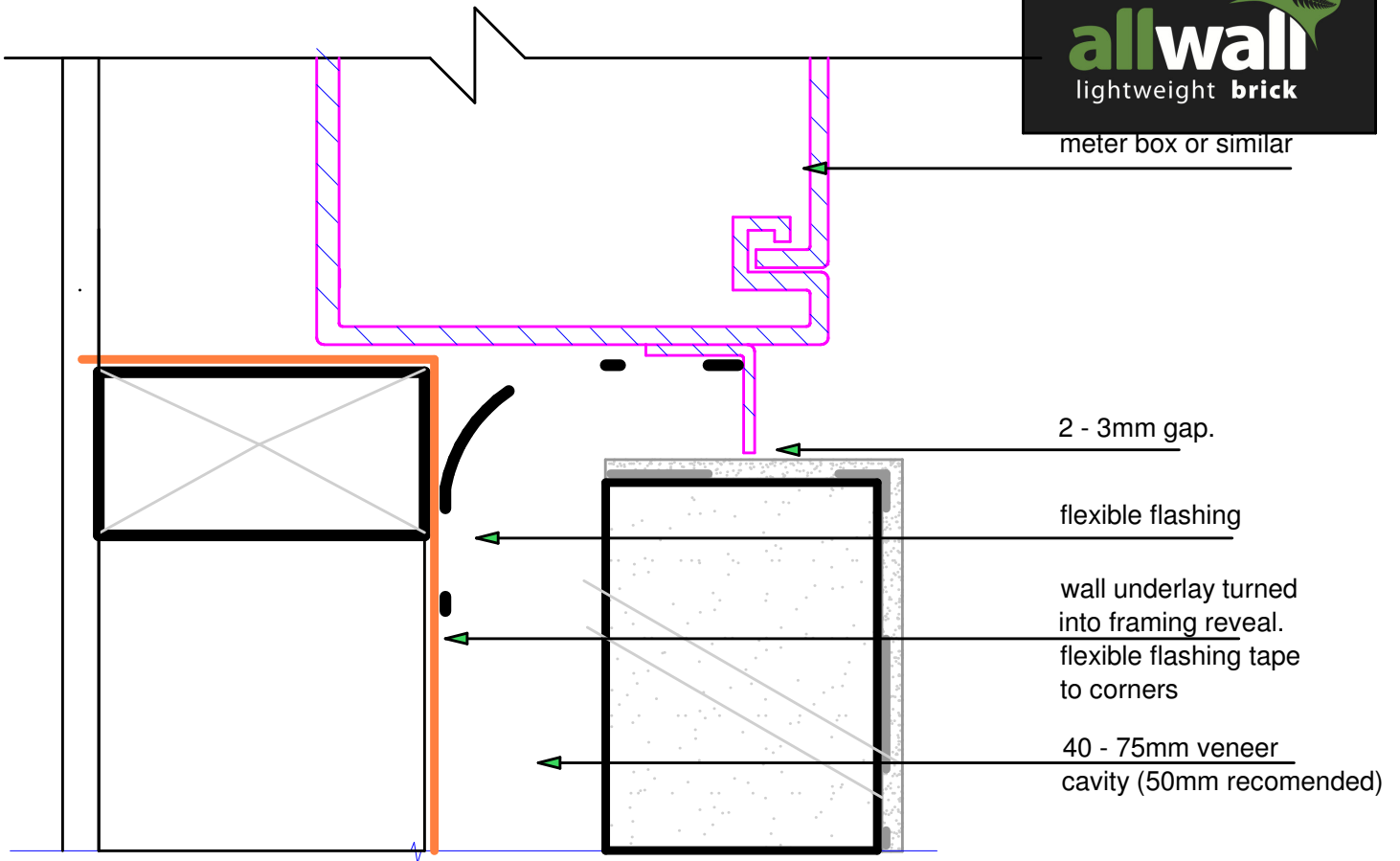


16A

scale 1:2

METER BOARD - HEAD & SILL.

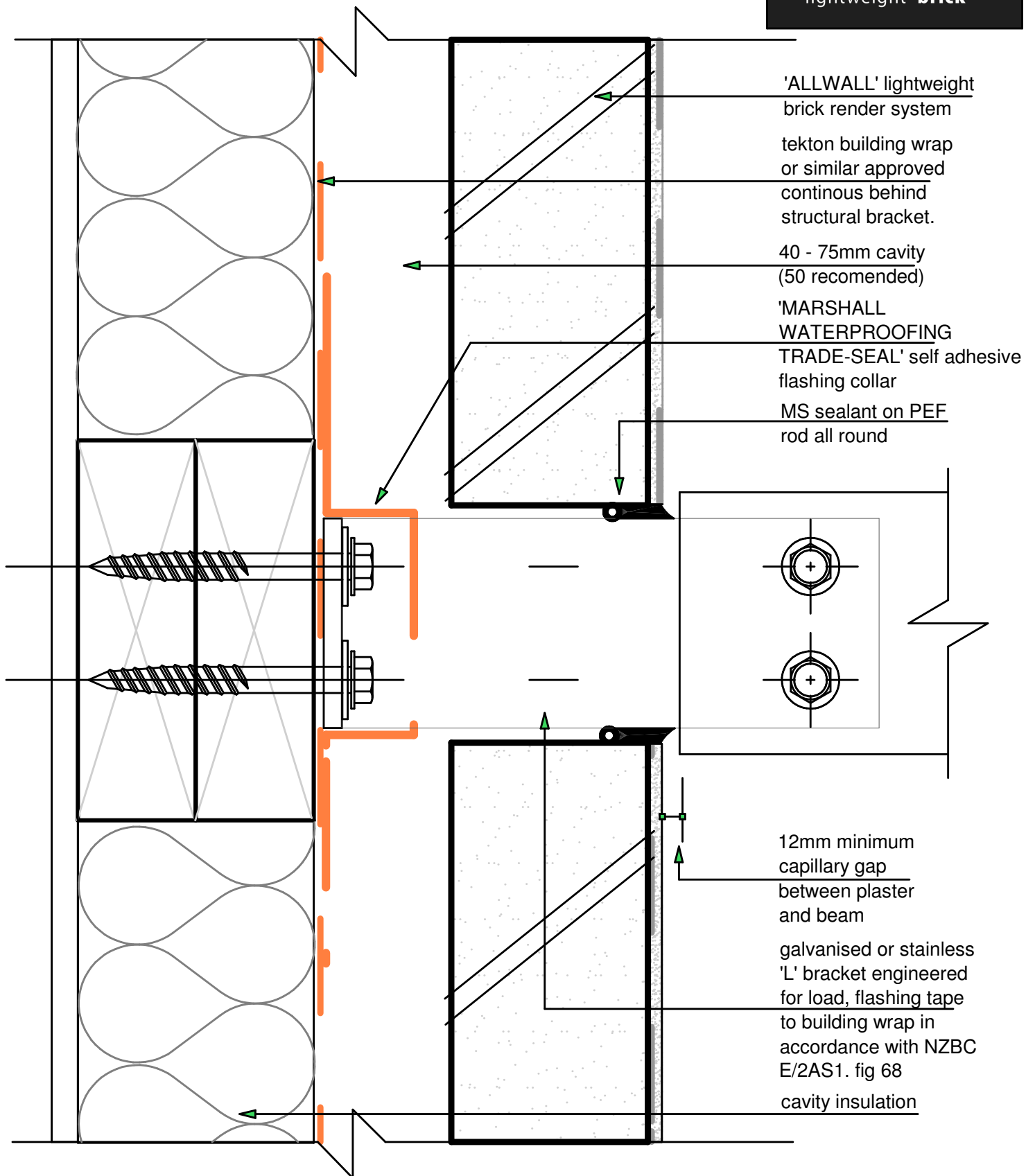
ALLWALL LIGHTWEIGHT BRICK.



17A
scale 1:2

METER BOARD - JAMB.

ALLWALL LIGHTWEIGHT BRICK.

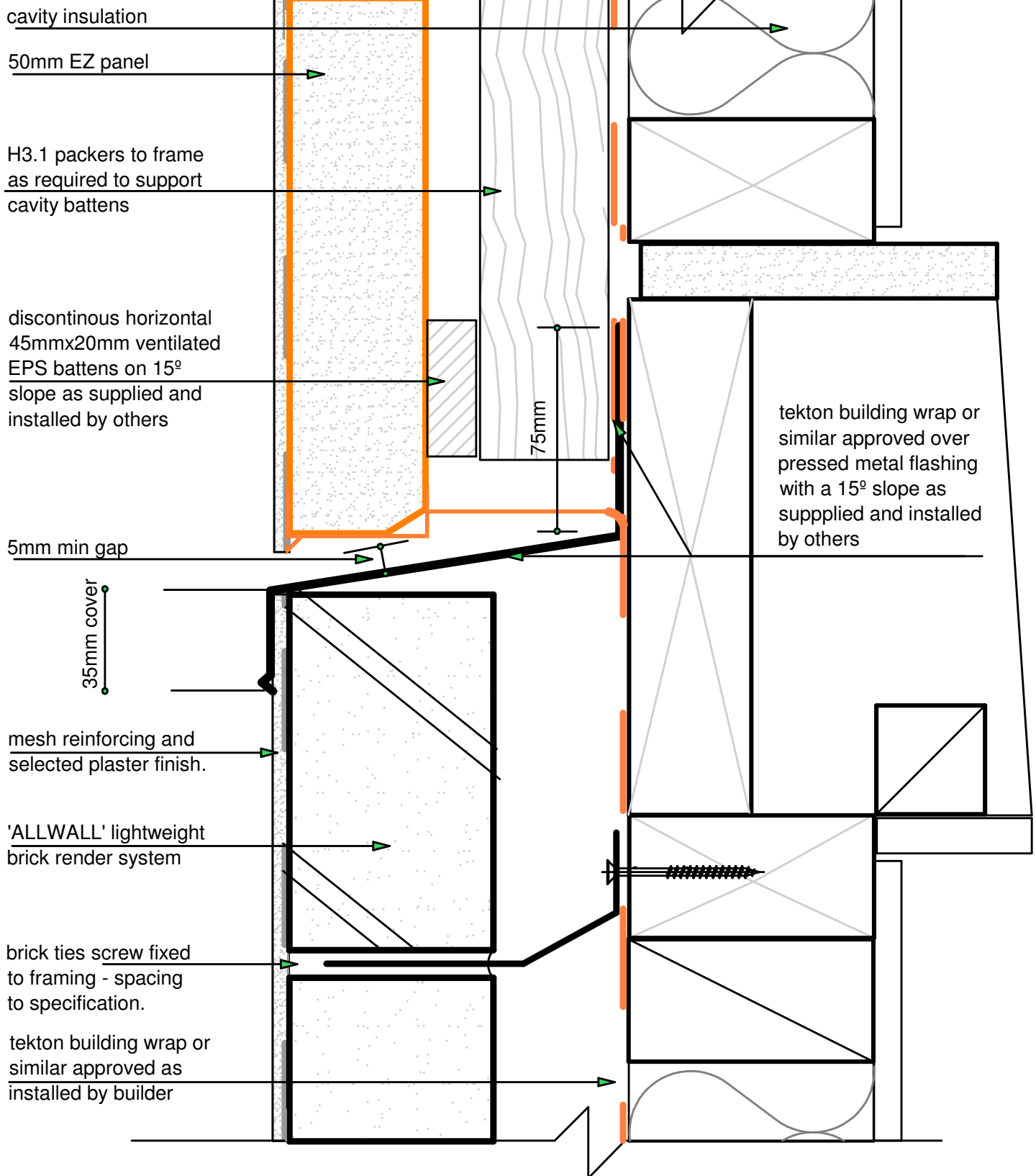


18A

scale 1:2

PERGOLA BEAM DETAIL

ALLWALL LIGHTWEIGHT BRICK.



19A

scale 1:2

INTER-STOREY DETAIL

ALLWALL LIGHTWEIGHT BRICK.

cavity insulation

50mm EZ panel

discontinuous horizontal
45mmx40mm ventilated
EPS battens on 15°
slope as supplied and
installed by others

mesh reinforcing and
selected plaster finish.

75mm

tekton building wrap or
similar approved over
pressed metal flashing
with a 15° slope as
supplied and installed
by others

5mm min gap

35mm cover

'ALLWALL' lightweight
brick render system

brick ties screw fixed
to framing - spacing
to specification.

tekton building wrap or
similar approved as
installed by builder

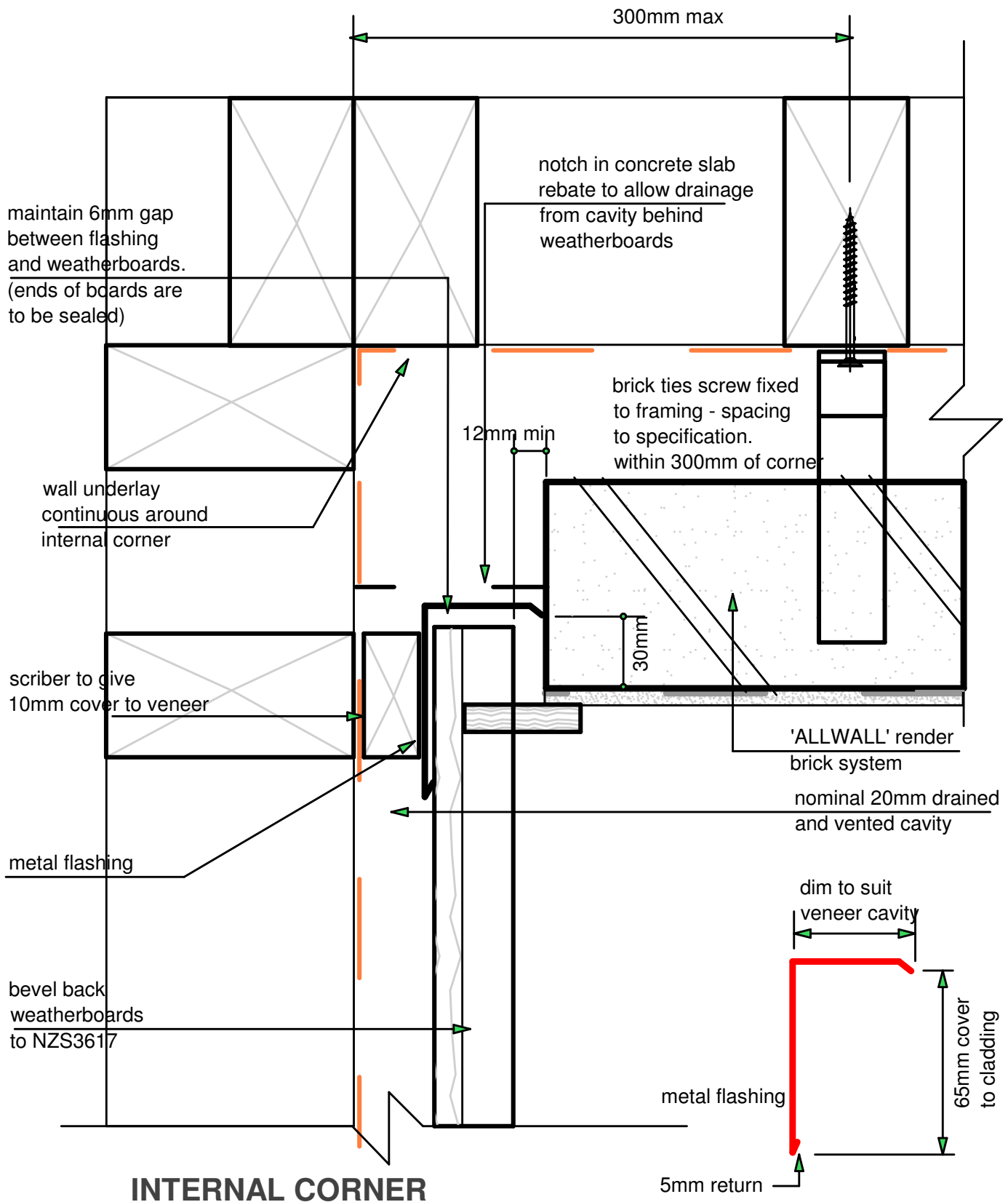
(alternative detail)

19B

scale 1:2

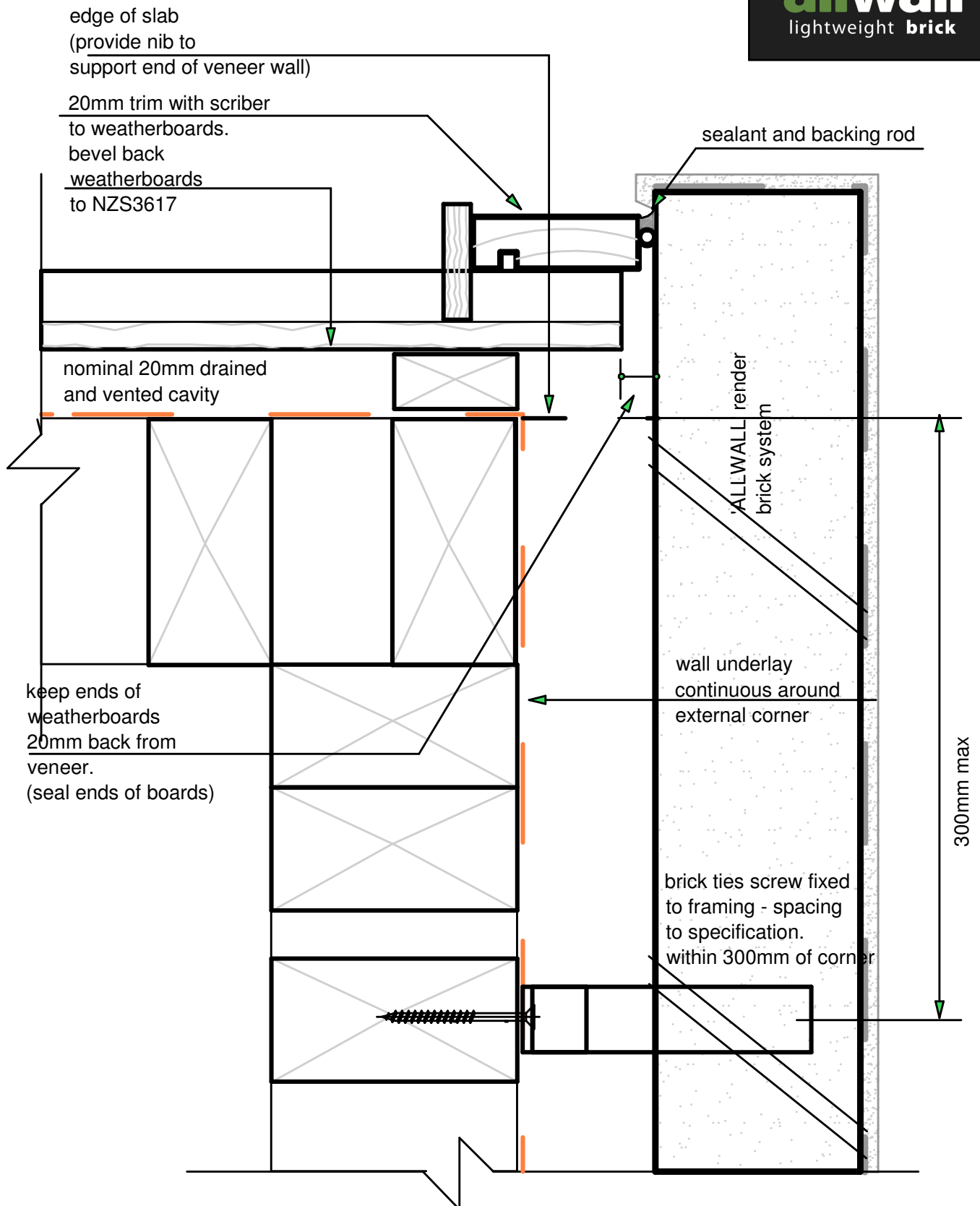
INTER-STOREY DETAIL*

ALLWALL LIGHTWEIGHT BRICK.



20A
scale 1:2

HORIZONTAL BEVEL-BACK WEATHERBOARDS

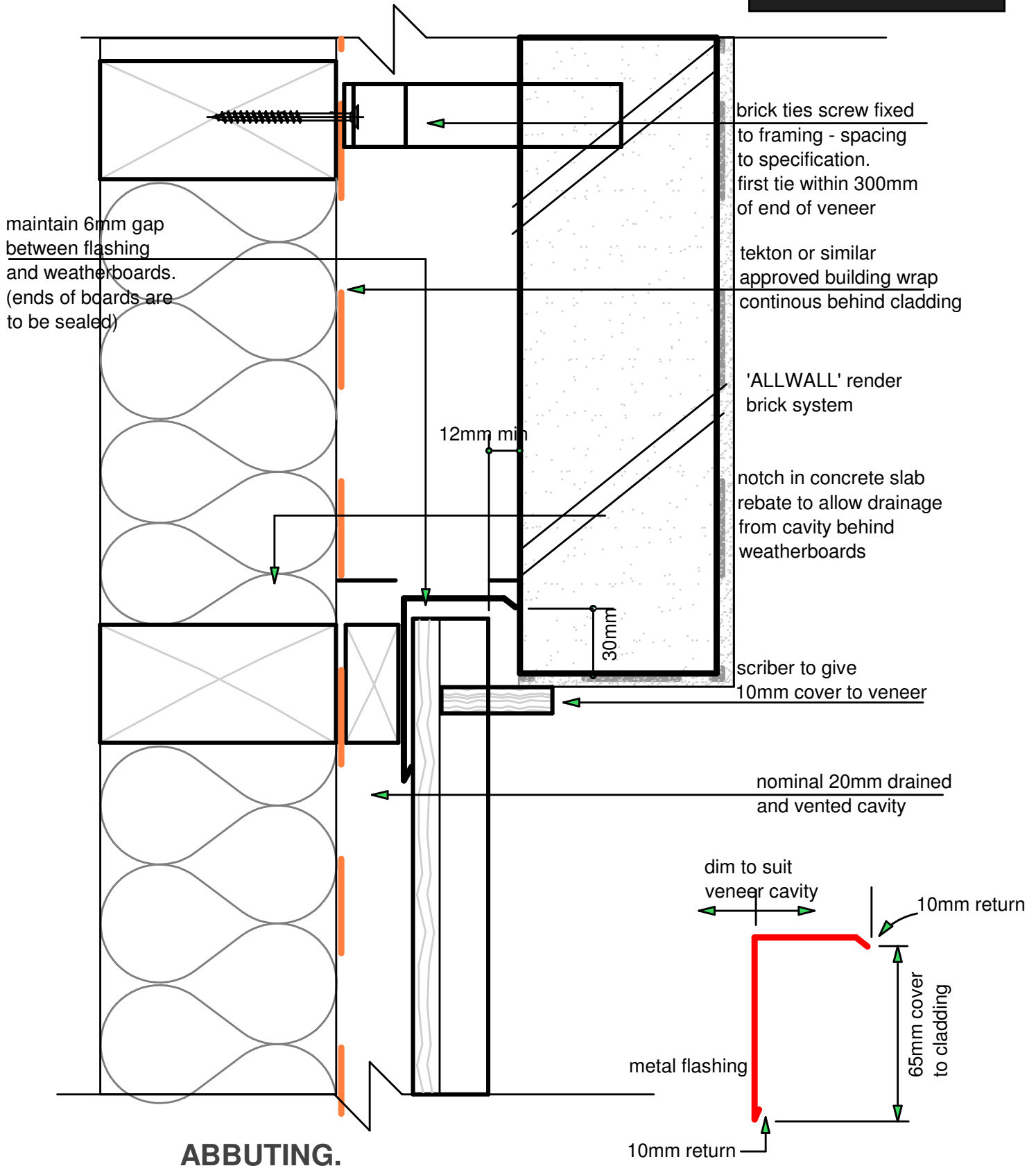


EXTERNAL CORNER

21A

scale 1:2

HORIZONTAL BEVEL-BACK WEATHERBOARDS



22A
scale 1:2

HORIZONTAL BEVEL-BACK WEATHERBOARDS